

How to add a toolbox item

Marc Schröder, 31 July 2006

This document explains how to add a tool to the HumaineToolbox by showing an example for the tool “Emotional Text-to-Speech System MARY”.

Step 1: Log in

Log in with your portal account, which on <http://emotion-research.net> has the form FirstnameLastname, e.g. JohnHumaineson if your name is John Humaineson. If you have forgotten your password, you can retrieve it by clicking on the “[Forgot your password?](#)” link in the login portlet.

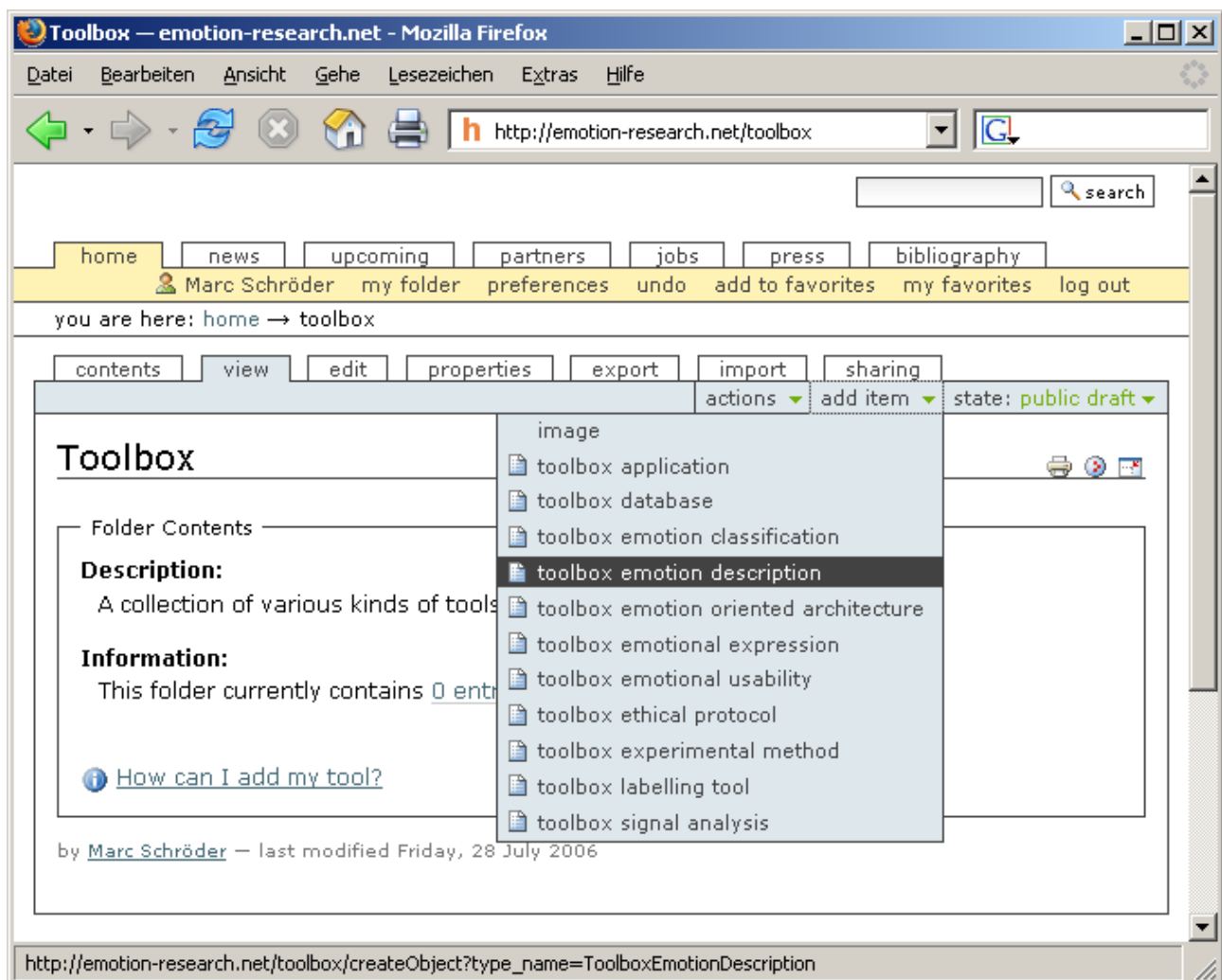
Step 2: Navigate to the Toolbox folder

On the HUMAINE portal, the toolbox folder is located in <http://emotion-research.net/toolbox>.

Step 3: Add a tool

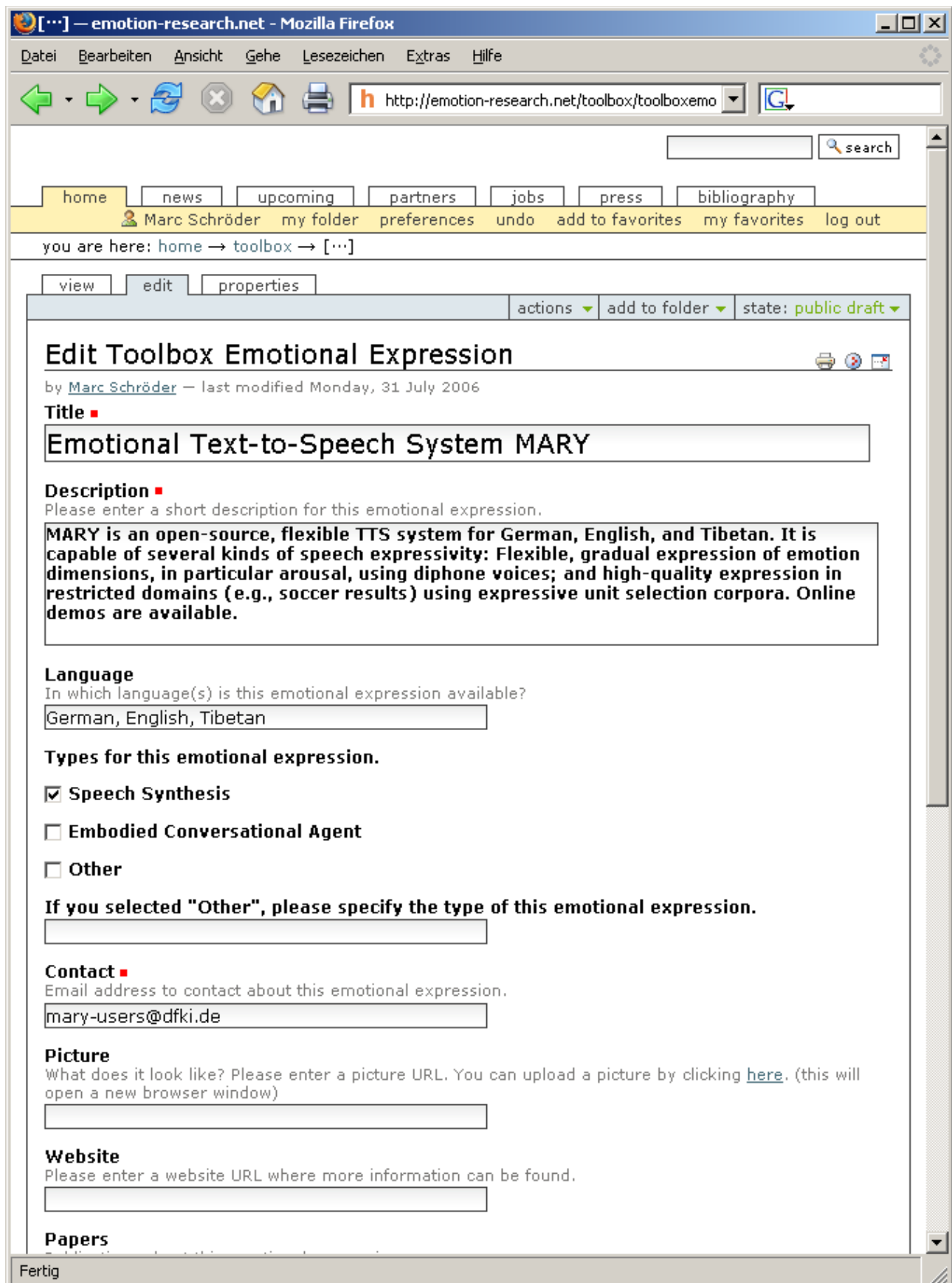
From the “add item” drop-down menu, select the type of tool that you wish to add. Think well before choosing, because there is no way to change this later (apart from creating a new entry, of course).

Here we want to create an entry describing an “emotion description” tool:



Step 4: Fill in the information about the tool

The exact information to fill in depends on the type of tool you are adding. In the case of our “emotion description”, this looks as follows.



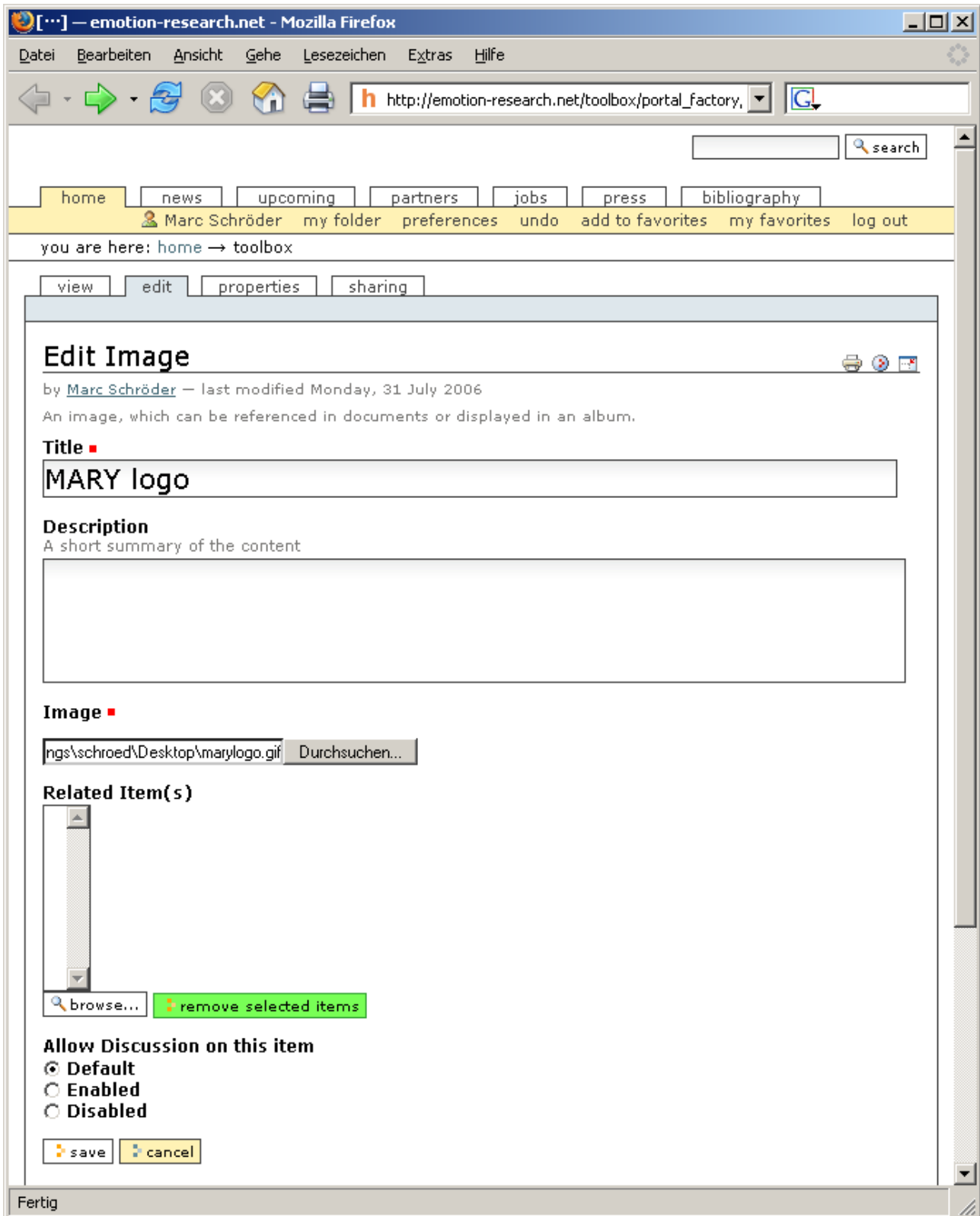
The screenshot shows a Mozilla Firefox browser window with the address bar at <http://emotion-research.net/toolbox/toolboxemo>. The page title is "Edit Toolbox Emotional Expression" by Marc Schröder, last modified Monday, 31 July 2006. The form contains the following fields:

- Title:** Emotional Text-to-Speech System MARY
- Description:** MARY is an open-source, flexible TTS system for German, English, and Tibetan. It is capable of several kinds of speech expressivity: Flexible, gradual expression of emotion dimensions, in particular arousal, using diphone voices; and high-quality expression in restricted domains (e.g., soccer results) using expressive unit selection corpora. Online demos are available.
- Language:** German, English, Tibetan
- Types for this emotional expression:**
 - Speech Synthesis
 - Embodied Conversational Agent
 - Other
- If you selected "Other", please specify the type of this emotional expression.** (Empty text box)
- Contact:** mary-users@dfki.de
- Picture:** (Empty text box)
- Website:** (Empty text box)
- Papers:** (Empty text box)

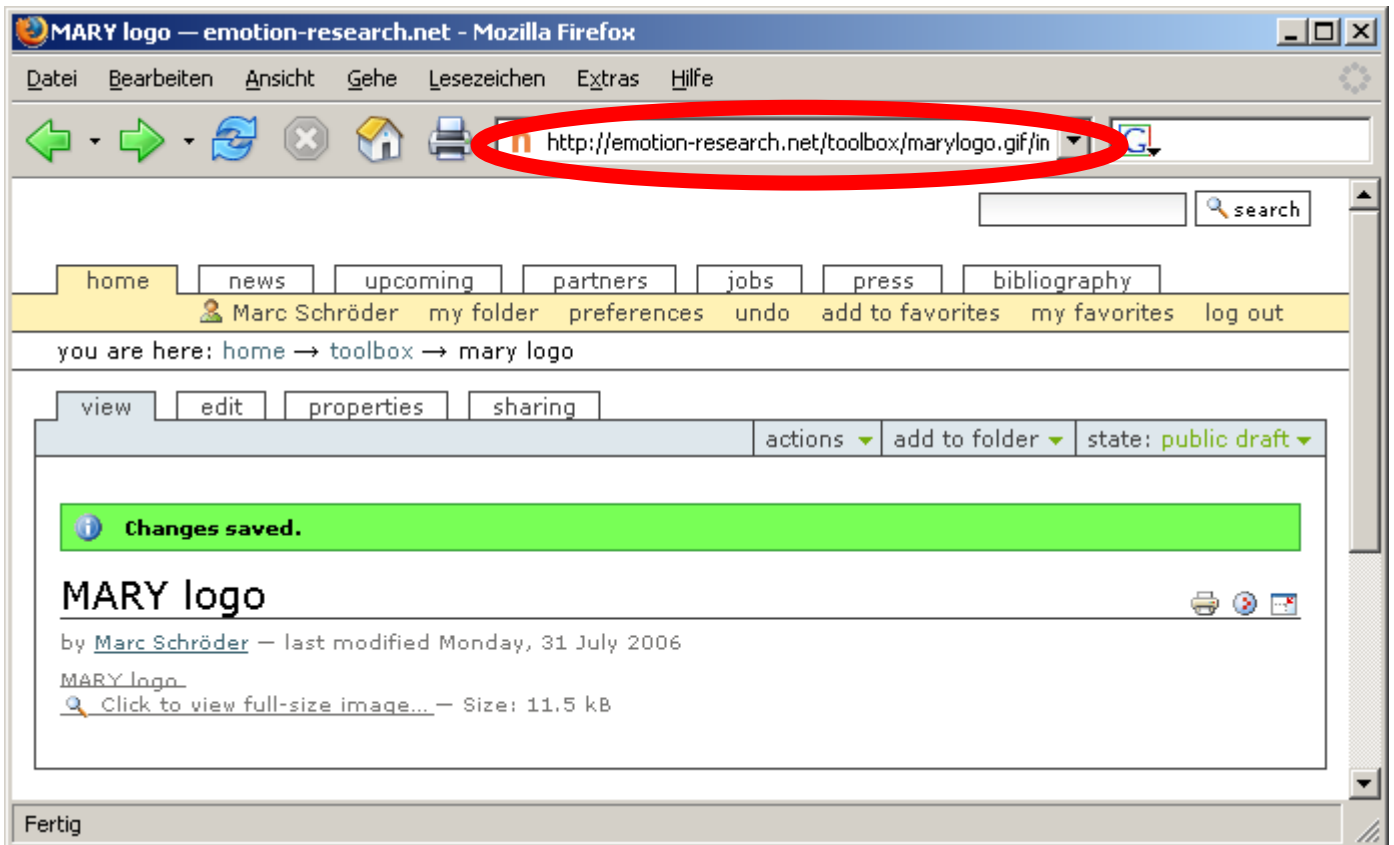
The status bar at the bottom of the browser window shows the word "Fertig".

As you can see, we filled this in up to the point where the form asks for a picture. If a picture describing the tool is available on the web and we are confident that the picture will stay available, we can insert an existing URL.

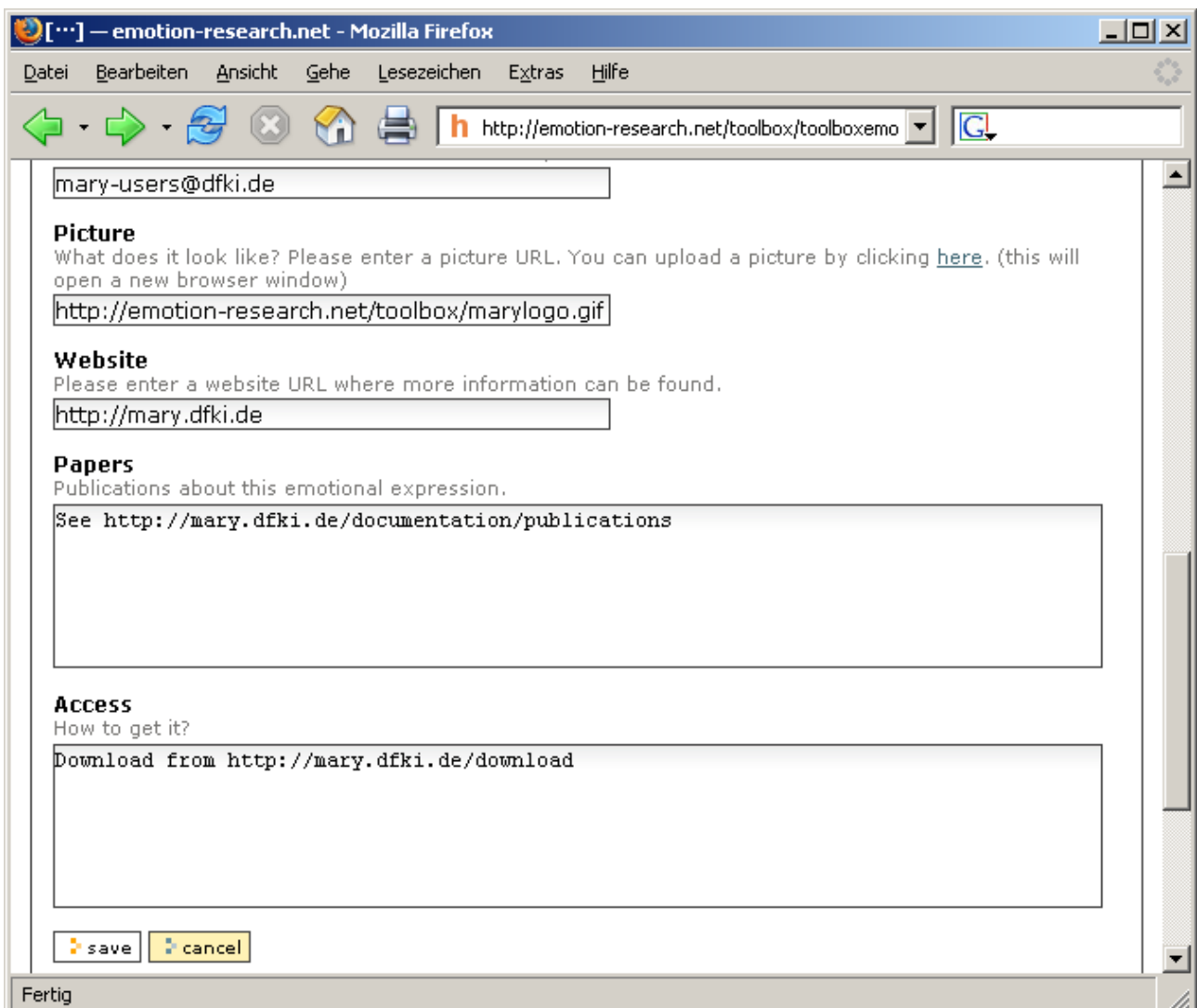
Alternatively, we can upload the picture, by clicking on the link in the comment (“...by clicking [here](#)”). In the window that opens, we upload a suitable picture. In the case of the MARY TTS system, where we do not have a visual appearance to show, we upload the MARY logo instead:



We click the “save” button to upload the image. The image is now located in the toolbox folder and has the same name as the file that we uploaded. In the example case, this means the picture that we want to show for MARY has the URL <http://emotion-research.net/toolbox/marylogo.gif>.



We can now close this window, and return to the form we were filling out about our tool. There, we insert the picture URL for our tool, and fill in the remaining fields:



Finally, we click the “save” button, and our tool description is on the portal:

Emotional Text-to-Speech System MARY — emotion-research.net - Mozilla Firefox

home news upcoming partners jobs press bibliography

Marc Schröder my folder preferences undo add to favorites my favorites log out

you are here: home → toolbox → emotional text-to-speech system mary

view edit properties actions add to folder state: public draft

Changes saved.

Emotional Text-to-Speech System MARY

Your document is currently available as a public draft only. Please submit it for approval by changing its state.

Overview

Description:
MARY is an open-source, flexible TTS system for German, English, and Tibetan. It is capable of several kinds of speech expressivity: Flexible, gradual expression of emotion dimensions, in particular arousal, using diphone voices; and high-quality expression in restricted domains (e.g., soccer results) using expressive unit selection corpora. Online demos are available.

Contact: mary-users@dfki.de **Language:** German, English, Tibetan **Website:** <http://mary.dfki.de>

Papers:
See <http://mary.dfki.de/documentation/publications>

Access:
Download from <http://mary.dfki.de/download>

Fact Sheet

Categorized by type:
✓ Speech Synthesis

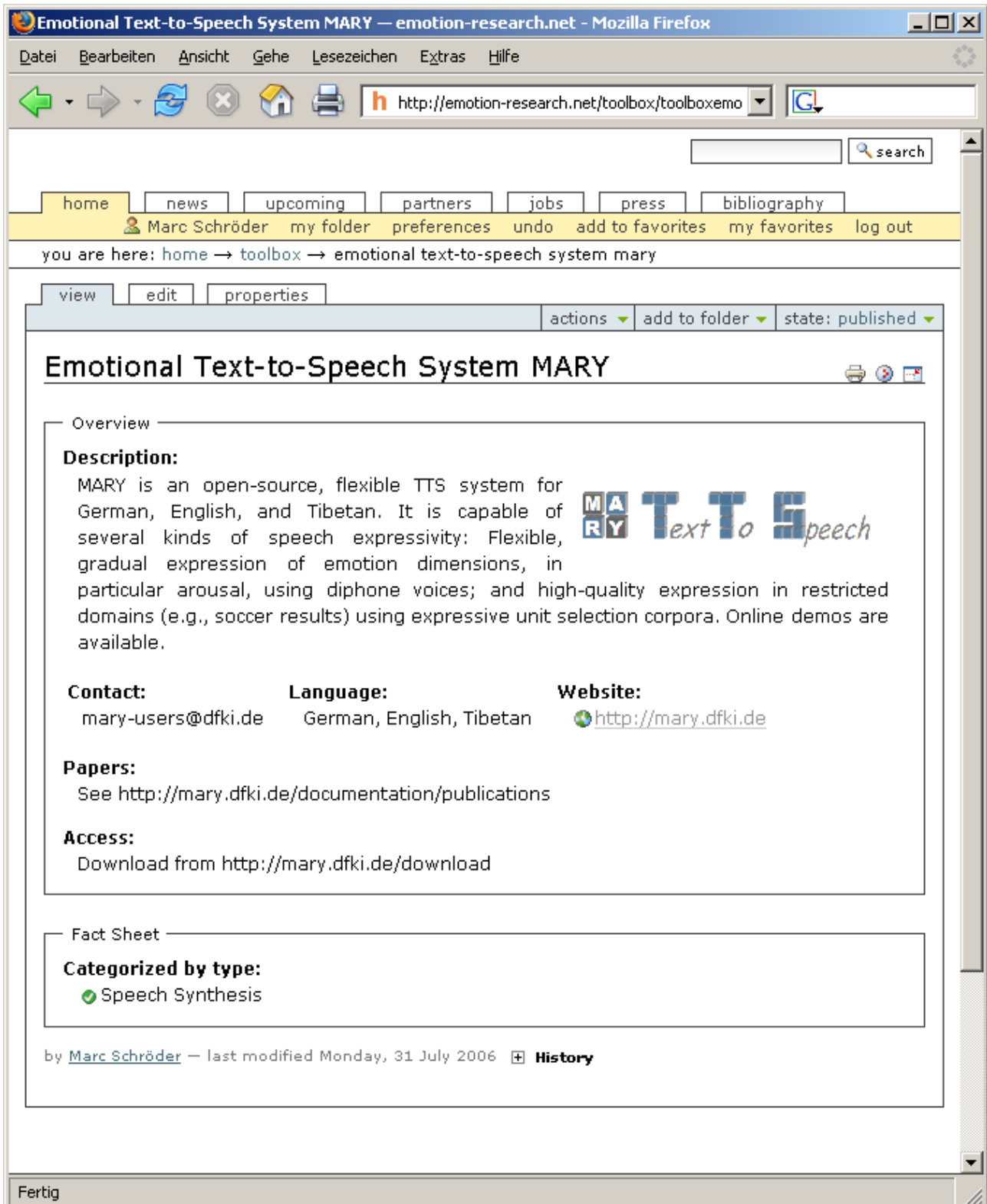
Fertig

This looks OK; otherwise we could edit again by clicking on the “edit” tab.

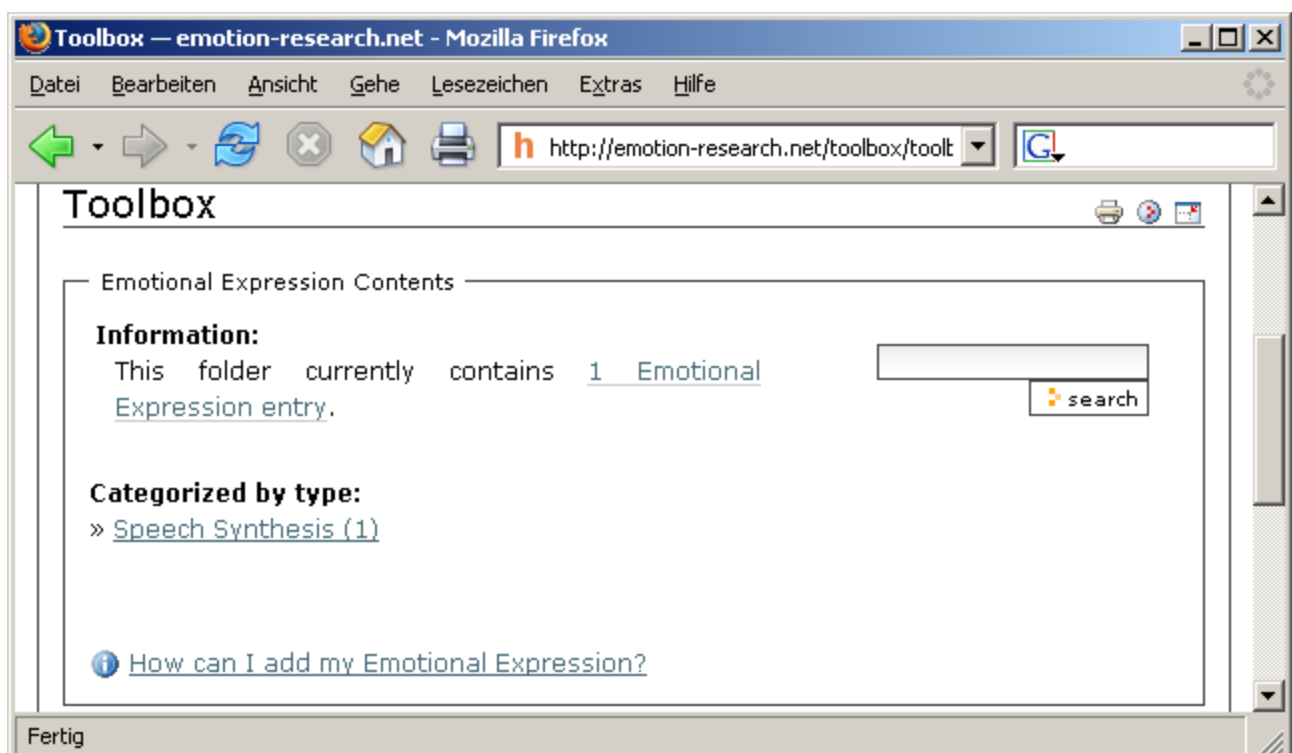
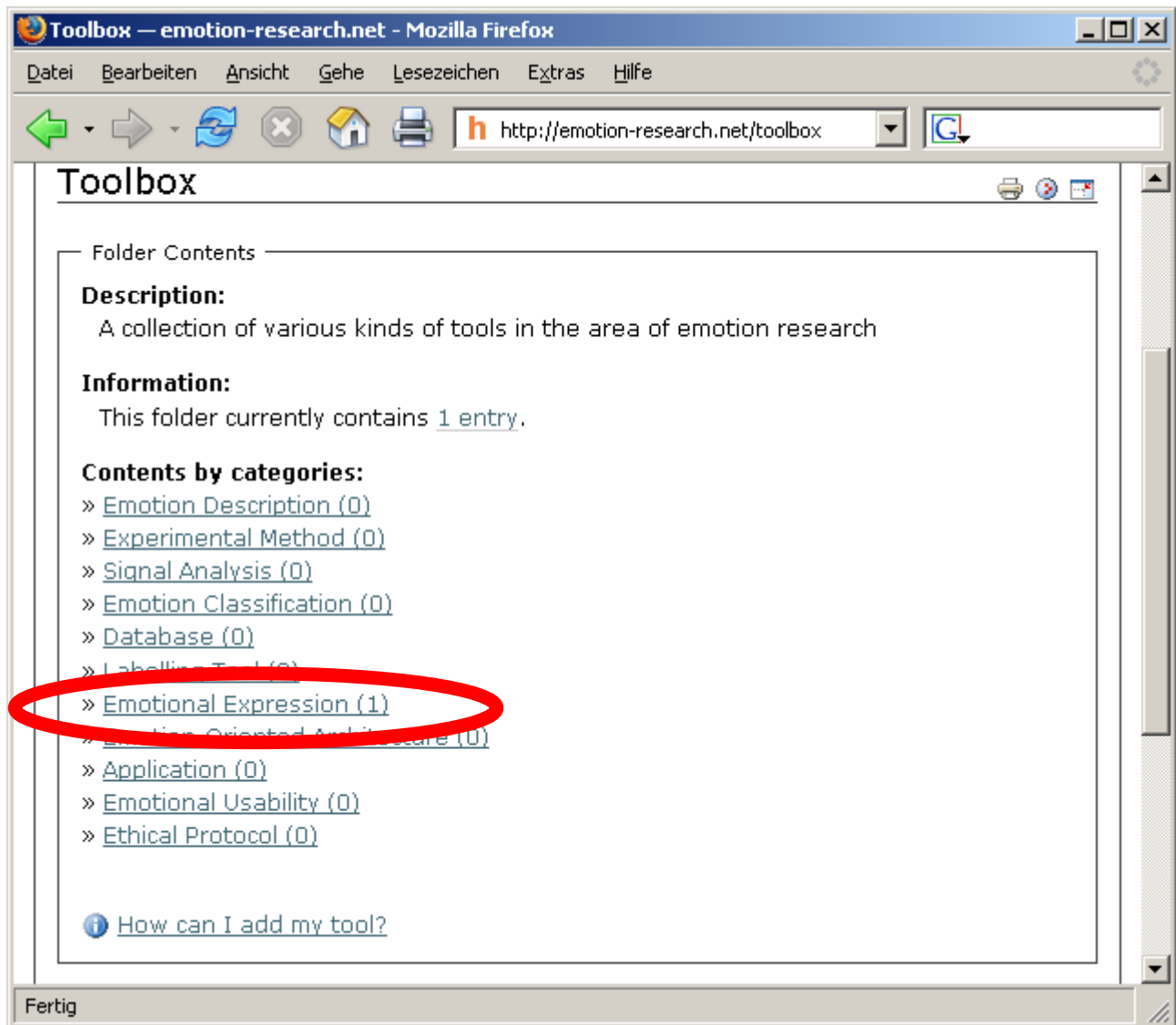
However, our tool is **not yet publicly visible!** We must first submit it for approval, by clicking on “state: public draft” in the blue bar, and selecting “submit”:



By this action, we cause an email to be sent to the responsible reviewer for the toolbox item type we selected; when this reviewer approves the tool, it becomes publicly visible:



The tool will now also be listed in the overview pages:



That's it – enjoy! :-)